

MAKING THE GRADE with Banner Medical

Banner Medical is an ISO 13485 certified supplier to the medical device industry. We carry an extensive portfolio of materials commonly used in the manufacturing of instruments and devices for the spine, extremities, orthopedic, and dental markets. The following provides an overview of product held in our inventory, and material grades which are readily accessible. In the event that you need a grade that is not listed, please do not hesitate to call us. Our ability to source and process material quickly allows us to easily customize and produce sizes to match your application requirements.

Stainless Steel Instrument, Implant, and Device Grades from .032" through 6.00" O.D.

303, 304, 316 Stainless	Type 420/420B Stainless
BioDur® 316LS Stainless	Type 440A Stainless
BioDur® 108 Alloy	Type 440C Stainless
BioDur® 22Cr-13Ni-5Mn	Type 17-4 PH
Custom 455® Stainless	Type 17-4 PH Cond. 900
Custom 465® Stainless	X15TN
Project 70® + Custom 630 (17Cr-4Ni) Stainless	Nitronic 60
Sandvik Bioline 316LVM (Implantable)	13-8 Stainless
Type 416 Stainless Cond. H (Rc 32 - 38)	

Titanium Implant and Device Grades from .032" through 6.00" O.D.

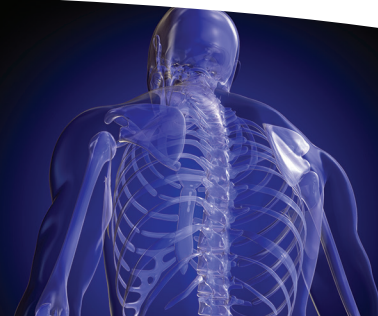
6Al-4V
6Al-4V ELI
6Al-7Nb
Commercially Pure Grade 1
Commercially Pure Grade 2
Commercially Pure Grade 3
Commercially Pure Grade 4

Implant Cobalt Chrome Grades (Rounds) from .032" through 2.500" O.D.

L-605
MP35N
BioDur® Carpenter CCM®
ASTM F1537/F799 Alloy 1
ASTM F1537/F799 Alloy 2



Many of the grades listed above are available in rounds, flats, profile shapes and tubing. Please contact us for all of your medical grade material requirements!





Aluminum Bar, Tubing, Profiles, and Shapes

2024

6061

6063

7075

Cannulated

Cannulated materials are commonly used in the manufacturing of intramedullary rods and pedicle screws for the fixation of bone fractures or securing implanted products. This unique product can also be used for catheters and other instruments frequently used in the medical device industry. Commonly stocked cannulated products are listed below. We are experts at sourcing cannulated bar as well as any other material that can be centerless ground. Please contact us for specific grades or sizes you may require.

455 Condition A Stainless Steel

Outside Diameter	Inside Diameter
.258"	.037"
.320"	.049"
.320"	.100"
.383"	.063"
.383"	.068"
.383"	.085"
.383"	.098"
.508"	.063"
.508"	.068"



465 Condition A Stainless Steel

Outside Diameter	Inside Diameter
.178"	.125"
.178"	.162"
.197"	.162"
.258"	.037"
.258"	.059"
.320"	.049"
.320"	.100"
.383"	.063"
.383"	.068"
.383"	.098"
.446"	.118"
.460"	.162"
.508"	.134"

Outside diameters can be ground to various sizes upon request. If the I.D. desired is listed, but the O.D. is not and falls under the maximum stocked O.D., Banner Medical may be able to grind to the desired O.D. size required. Additional custom sizes can be available upon request. Please contact us for more information.



494 East Lies Road, Carol Stream, IL 60188-9425
Toll-Free: 800.323.9732 • T: 630.868.1200 • Fax: 630.653.7555
www.banner-medical.com

